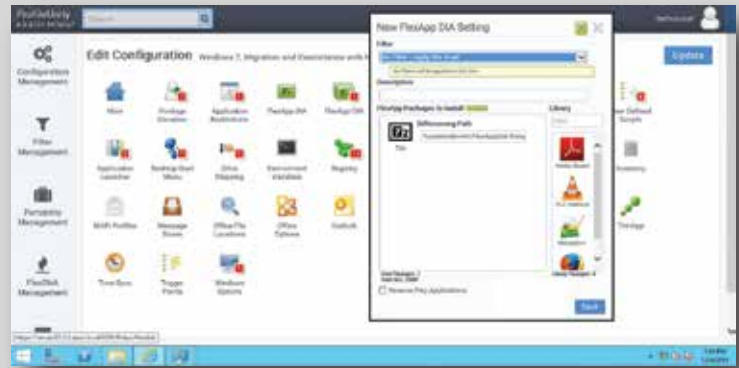





Application Layering Solution

FlexApp Layering is advanced application delivery technology that is tightly integrated with the ProfileUnity User Environment Management platform. It is a fully integrated solution that leverages profile settings and policies but can also be implemented as a stand-alone solution. FlexApp enables Administrators to assign department-level applications to groups of users, and to, optionally, empower selected users to install their own applications. FlexApp complements application virtualization solutions that use isolation, such as Microsoft App-V and VMware ThinApp. FlexApp application layering is also compatible with many desktop virtualization platforms, including Citrix XenApp/XenDesktop and VMware Horizon View. These environments can be kept ultra secure, by leveraging ProfileUnity's Application Rights Management features, which eliminates the need to make users full "Local Admins" in order to run or install applications.



Because FlexApp layers are packaged and not isolated as in traditional application virtualization solutions, they, therefore, "look" native to the Windows OS and to other dependent applications. Even complex applications with multiple dependencies, such as Microsoft Office, iTunes, QuickBooks and Adobe Creative Suite, can be delivered successfully via FlexApp, enabling this advanced feature package to support a very wide spectrum of application use cases.

<p>Application Strategy FlexApp can seamlessly integrate with enterprise Application Strategies</p> 	<p>Application Lifecycle Management Reduce application packaging complexity through FlexApp Layering</p> 	<p>Application Delivery FlexApp can seamlessly integrate with any existing application deployment platform</p> 
--	--	---

KEY BENEFITS

- Optimized application delivery
- Lower compute, network, and storage costs of desktops
- Filter driver controlled communication with the host OS
- Better desktop performance, at scale
- Improved end user experience
- Highly efficient application update capabilities
- Higher degree of application packaging success
- Streamlined and superior application lifecycle efficiency
- Support for Windows XP, 7, 8, 10
- Support for Windows Server 2008/12

FlexApp allows administrators to package, manage and deploy applications on a context-aware basis without altering the basic desktop image(s). Layering is a proven technology that complements application virtualization strategies.

Windows Migrations — By eliminating the native install of applications with FlexApp, the complexity of the Windows migration process is greatly reduced. Administrators can simply attach FlexApp Layers like puzzle pieces.

Complete UEM and Layering Solution — ProfileUnity and FlexApp are tightly integrated to provide the most advanced UEM solution on the market today.

Real-Time Application Delivery — FlexApp Layers can be attached during the standard logon process, and are available immediately without having to wait for an install. Using advanced filter drivers, FlexApp Layers can be detached at logoff without tattooing the host operating system.

Affordable Desktop Infrastructure — Compared to other solutions, FlexApp is an extremely cost effective application management solution. When combined with ProfileUnity, the customer benefits are off the charts. Price comparisons against competitor solutions prove that ProfileUnity and FlexApp provide the greatest value to customers...period.

Seamless End User Experience — FlexApp allows for applications to follow a user across devices and sessions, whether it is physical or virtual, which leads to a more robust user experience.

Disaster Recovery — Because FlexApp Layers are portable and can be decoupled from the OS, hardware, and stored on a datacenter share, these can be backed up and replicated to secondary sites with in-house backup and replication solutions. If outages occur, these can all be easily restored to users from the secondary site to any authorized end-point device.

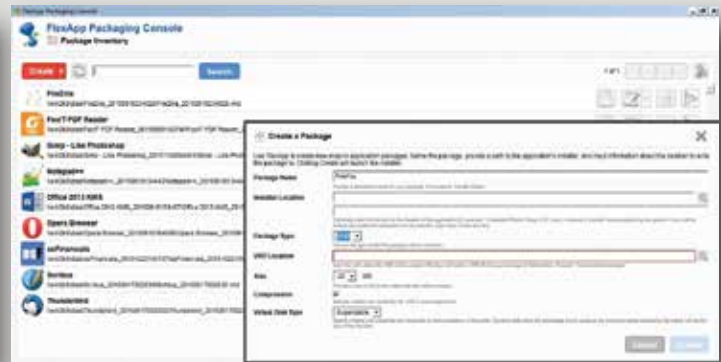
Learn More

For more information about how effective Liquidware products can be in your environment, visit <http://www.liquidware.com> or by contacting sales@liquidware.com.

Key Advantages	FlexApp	Others
Seamless integration with the corresponding ProfileUnity management platform.	Yes	No
Point and Click clustering embedded within the solution. No need for separate load balancers or SQL clusters.	Yes	No
Directly create and manipulate the VHD and VMDK files which leads to greater efficiency and optimization without the need for templates.	Yes	No
Seamless integration and support for numerous cloud based strategies including CWC and Microsoft Azure.	Yes	No
Efficient filter driver technology that interacts natively with Windows OS built on Microsoft .Net.	Yes	No
The ability to transfer layers between VMDK and VHD architectures.	Yes	No
The ability to clone individual FlexApp Layers for enhanced update capabilities.	Yes	Few
FlexApp Layering provides support for Outlook Indexing, which can be a tremendous user experience benefit for the enterprise.	Yes	No
Seamless integration with many platform vendors as opposed to a single platform.	Yes	No
Reduced infrastructure overhead, by making fewer inquiries to the hypervisor.	Yes	No
Opportunity to eliminate "Image Jail" and begin to take advantage of true non persistence within environments.	Yes	No



ProfileUnity Administration Console



FlexApp Packaging Console

FlexApp can:

Save Time	Save Money	Boost Productivity
Seamless communication between ProfileUnity and the FlexApp Packaging console increases application management efficiency.	Administrators spend less time managing applications. Administrative staff-hours to support help desk calls are dramatically lessened.	Optimize application lifecycle management by reducing application packaging complexity.
FlexApp layering allows administrators to instantly "snap-in" applications by group, department, user, or machine.	Reduce image management by a factor of 10x or more, as fewer applications are natively installed within the server OS.	Give users the applications they need to do their job based on context-aware settings. Grant access to applications within seconds.
FlexApp Layers can essentially follow users from session to session based on tight integration with ProfileUnity.	Leverage non-persistent virtual desktops to lower storage costs. Deliver/restrict applications to only the users who need them, lowering license fees.	On demand access to the applications they need without having to wait for the native install.



About Liquidware

Liquidware™ provides desktop transformation and workspace management solutions for hybrid Windows desktop environments including Citrix®, VMware® and physical Microsoft® Windows PCs. Stratusphere™ FIT and Stratusphere™ UX solutions deliver visibility into desktop environments and support assessment, design, monitoring and diagnostics (Health Checks). ProfileUnity™ provides just-in-time delivery of User Profiles, context-aware policies, and Application Rights Management. FlexApp™ enables administrator and user level application layering. Flex-IO™ supports IOPS acceleration in virtual desktop environments. The solutions are available in an extremely cost-effectively priced bundle called Liquidware Essentials. Liquidware solutions are Citrix Ready and VMware recommended, and are available through a global network of partners. Visit www.liquidware.com for further information.

