

User Environment Management and Application Layering

ProfileUnity delivers industry-leading User Environment Management and includes FlexApp Application Layering options. The solution unifies user profiles, policies, and user-data management to speed any Windows logon, streamline management, and end OS migrations for users. FlexApp Application Layering enables both Administrator- assigned and user installed applications.

ProfileUnity provides exclusive built-in features such as Application Rights Management, ProfileDisk profile layering options, and a built-in point-and-click high-availability design. Policies, application access, and profiles are context-aware, enabling users to uniquely experience their Windows workspace based on the location, type of session, group attributes, or regulatory compliance standards that your organization must meet.



Windows Migrations
To newer Windows OS versions and virtual desktops

Profile Management
Replace Roaming Profiles and Folder Redirection

Environment Management
Manage GPO for Drivers, Printers, Applications, etc.

Application Layering
FlexApp keeps base image management to a minimum.

Desktop Disaster Recovery
Replicate persona, data, & applications to secondary DR sites

KEY BENEFITS

- One user profile for VDI, RDSH, and DAAS desktops
- Up to 10x faster logins with ProfileUnity versus Roaming Profiles and Group Policies
- Location/Context-Aware Policy & Profile Capabilities
- Application Rights Management
- ThinApp Inventory & Provisioning
- Support for Heterogeneous Windows OS Environments
- Migration of XP Profiles to Windows 7/8/10/Server 2008/12
- Migration of User-Authored Data from Legacy Systems
- Advanced Folder Redirection

ProfileUnity is an award-winning user profile and user environment management solution for both physical and virtual desktops. This solution provides organizations with key benefits that move a desktop transformation project forward including:

Windows Migrations — A universal profile is compatible with older as well as current Windows operating systems. You can harvest existing profiles from current OS to “migrate once and for all.”

Profile Management — ProfileUnity replaces Roaming Profiles and Folder Redirection with reliable, secure and robust profile management. Organizations can be sure that user profiles remain uncorrupted, and files and data are kept safe in centrally stored and managed repositories in the data center. Logins are fast and consistent across all end-point devices and all Windows desktop delivery platforms including physical, shared-hosted (RDSH), and virtual, including Citrix and VMware desktops.

Environment Management — ProfileUnity offers tight integration with Active Directory to leverage existing user group organization. But then ProfileUnity goes beyond group policy to offer more than 300 “context” conditions, including Group Membership, User Name, Computer Name, Login Server, Domain, OS Architecture and much, much more, to create policy and provide access to resources. The Triggers feature further allows policy and other actions to activate based on specific user behavior. Application Rights Management allows desktop administrators to fine-tune control and privileges regarding if, how and when users can access applications. ProfileUnity also supplies management capabilities for application virtualization technologies, including Microsoft App-V and VMware ThinApp.

Application Layering — FlexApp Layering allows administrators to package, manage and deploy applications on a context-aware basis without altering the basic desktop image(s). Layering is a proven technology that complements application virtualization strategies.

Desktop Disaster Recovery — Because user profiles, settings, files and data are decoupled from the OS and hardware, and stored to the datacenter share, these can be backed up and replicated to secondary sites with in-house backup and replication solutions. If outages occur, user profiles, settings and data can all be easily restored to users from the secondary site to any authorized end-point device.

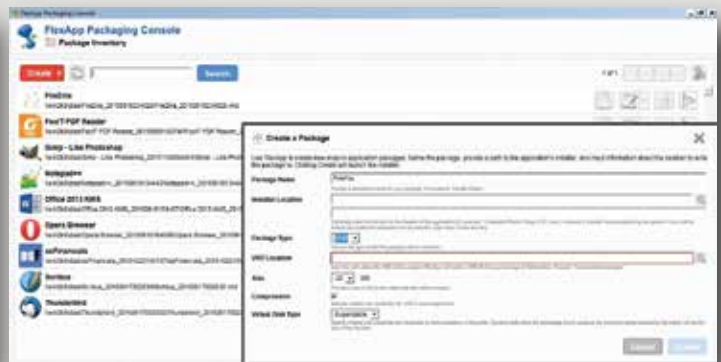
Learn More

For more information about how effective Liquidware products can be in your environment, visit <http://www.liquidware.com> or by contacting sales@liquidware.com.

Key Advantages	ProfileUnity	Others
Profiles and data stay in Windows® native formats.	Yes	No, require proprietary formats
Harvests existing user-authored files/data in background, leaving users unaffected.	Yes	No
Does not require SQL and IIS Servers, which adds to project time and cost.	Yes	No, require backend systems
Enterprise implementation is possible in one afternoon.	Yes	No
Harvests and migrates existing Windows profiles; allows co-existence in mixed XP, Windows 7, Windows 8, Windows 10 and server-based computing environments.	Yes	No
Does not rely on Microsoft Roaming Profiles, but can harvest both standard and Roaming Profiles.	Yes	No
Profiles can be restored or rolled back with a simple 2-click process.	Yes	No
Overcomes typical Microsoft profile corruption 100%.	Yes	No
No software installation processes to run on desktops.	Yes	No
Application virtualization management capabilities include deploy, cache, or assign applications dynamically.	Yes	No
Supports User and Department installed applications with FlexApp.	Yes	No
Zero CPU, RAM, IOPS usage during Windows session.	Yes	No
Extremely affordable pricing; no backend systems investment required for best ROI, TCO of all competing solutions.	Yes	No



ProfileUnity Administration Console



FlexApp Packaging Console

ProfileUnity with FlexApp can:

Save Time	Save Money	Boost Productivity
On-board and manage users on any virtual or physical desktop running XP/7/8/10/Server 2008/12/16 after they log off with ProfileUnity just once in the legacy environment.	Administrators spend time managing users and desktops, rather than ProfileUnity back-end systems. Administrative staff-hours to support help desk calls are dramatically lessened.	Users instantly have access to their mission-critical user-authored data and persona at every logon, from any desktop in the enterprise, regardless of Windows OS or delivery method.
Leverage built-in FlexApp application layering to instantly "snap-in" applications by group, department, user, or machine level.	Reduce image management by a factor of 10x or more. Dynamically assign applications at logon or during a user session.	Give users the applications they need to do their job based on context-aware settings. Grant access to applications within seconds.
Implement administrative context-aware policy settings for desktops from one central console.	Leverage non-persistent virtual desktops to lower storage costs. Deliver/restrict applications to only the users who need them, lowering license fees.	Users have instant access to the resources they need such as printers, drives (or other devices) and proper configurations of the desktop.



About Liquidware

Liquidware™ provides desktop transformation and workspace management solutions for hybrid Windows desktop environments including Citrix®, VMware® and physical Microsoft® Windows PCs. Stratusphere™ FIT and Stratusphere™ UX solutions deliver visibility into desktop environments and support assessment, design, monitoring and diagnostics (Health Checks). ProfileUnity™ provides just-in-time delivery of User Profiles, context-aware policies, and Application Rights Management. FlexApp™ enables administrator and user level application layering. Flex-IO™ supports IOPS acceleration in virtual desktop environments. The solutions are available in an extremely cost-effectively priced bundle called Liquidware Essentials. Liquidware solutions are Citrix Ready and VMware recommended, and are available through a global network of partners. Visit www.liquidware.com for further information.

